

# ROTARY PHASE CONVERTER PACKAGES



Elite Industrial Mfg. offers several rotary phase converter packages that can be installed during the building process. It is important to discuss these packages with your sales person prior to ordering your phase converter as they cannot be added later. **\*\*All converters ordered without packages are considered a starter package. \*\***

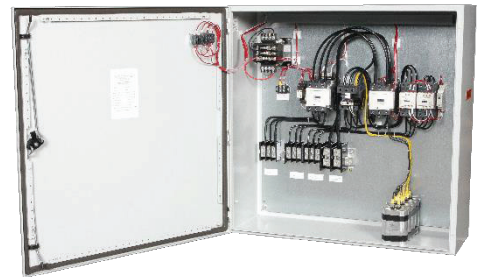
## STARTER PACKAGE



## START/AUTO PACKAGE



## CURRENT CUTTER PACKAGE



**STARTER PACKAGE:** The starter package "S" is our most basic package with a built-in starter, and illuminated ON/OFF push button switch. This package requires the customer to bypass the single-phase power to the load. Please refer to our STARTER PACKAGE customer wiring diagram.

**START/AUTO PACKAGE:** The Start/Auto Package "SA" is our best seller. This unit has a built-in starter, overload, illuminated ON/OFF push button switch, H/O/A switch, output delay contactor, and send/return auto control contact blocks. This unit internally bypasses the single-phase power and isolates the output from the load until the converter reaches full speed. This package is very easy to install requiring only single-phase input and three phase output all from one panel. Please refer to our START/AUTO customer wiring diagram.

**CURRENT CUTTER PACKAGE:** Our Current Cutter Package is designed for 30HP phase converters on up and will reduce the starting current of the phase converter by 70%. This built in mechanical soft start will reduce wear and tear on the electrical winding and bearings of the generator motor, save you money on your utility bills, and also help with local utility requirements.

**MAIN BREAKER PACKAGE** Our main breaker package includes a built-in main breaker and through the door disconnect handle. With this package the customer will no longer need to provide a disconnect and fuses before the phase converter. Saves on installation costs.